



Raviraj
Spring

Experience the colours of Happiness

Happiness
in full Bloom



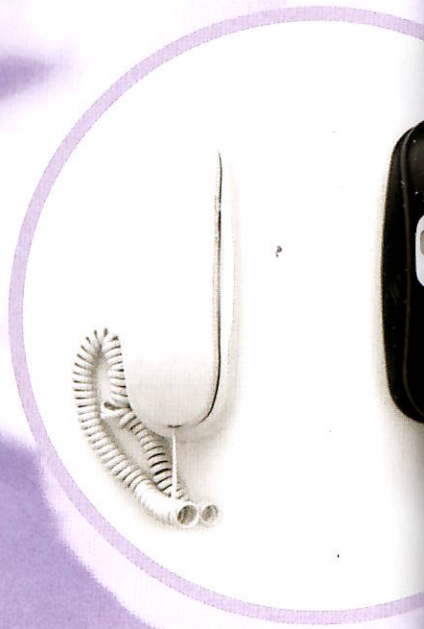


Spring is the season of colors and happiness. At Raviraj Group, we have always strived to provide homes that are designed to give you ultimate comfort & happiness. Raviraj Spring is our iconic residential project that is designed to add all the necessary colors of happiness in your life. Just like the season of spring where nature blossoms in all its glory, Raviraj Spring offers all the living comforts to make your life bosom with happiness. Raviraj Spring is our eco-friendly project which harnesses the solar power as well as provides rain water harvesting facilities. The project is close to National Highway and has international schools, malls & multiplexes in the vicinity. It is designed to provide easy connectivity and reach.

Come, Explore A Lifestyle of Colors & Happiness at Raviraj Spring!

Builder: M/s Raviraj Housing (Prince City)
Architect: Anish & Associates
Design Architect: Anish & Associates
Legal Advisor: D.G. Naik
RCC Consultant: Anish & Associates

Explore a Lifestyle
of Comfort, Peace and Serenity





Amenities

- Ample Car Parking Space
- CCTV Camera Surveillance
- Intercom Facility in each Flat
- High Speed Elevators
- Stylish Lobby & Elegant Elevation
- Rain Water Harvesting
- 100% Power backup for Essentials in Common Areas
- Solar Panels



Specifications

- Vitrified tiles flooring
- Intelligent electrical layout with adequate points
- TV & Telephone Points in Living room & Bedrooms
- Slidings windows of colour anodized section with tinted glass
- Laminated finish doors & main door with quality brass fittings & locks
- Premium quality paint on walls in all rooms
- Granite kitchen platform with separate cooking & service platform with stainless steel sink
- Full tiles dado kitchen
- Designer tiles in toilets








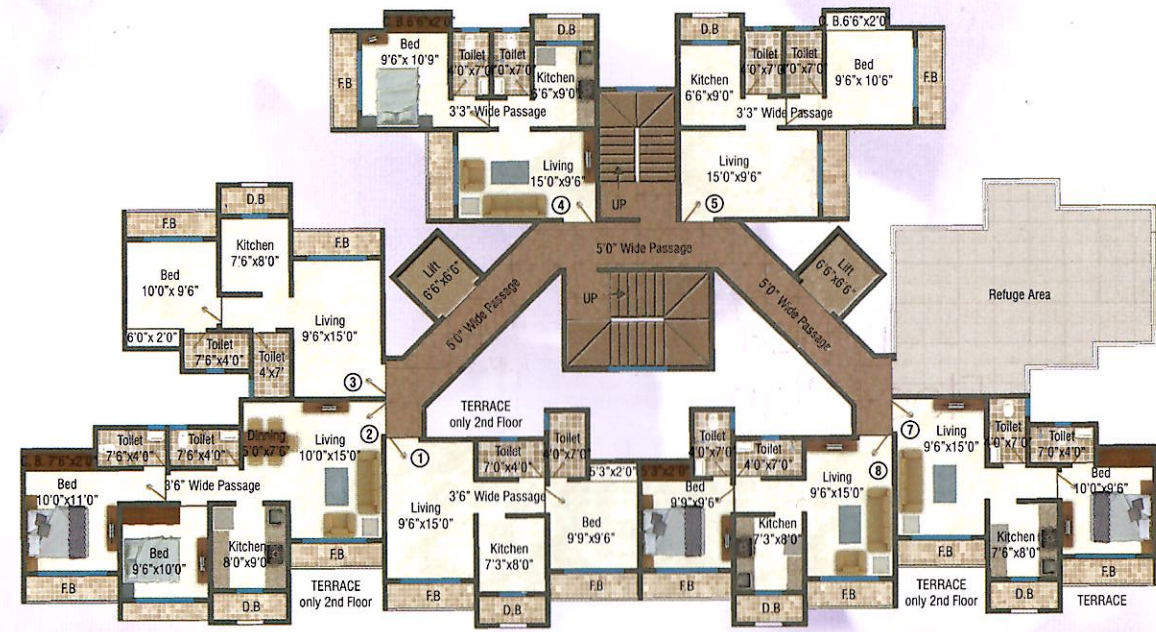


Typical Floor Plan



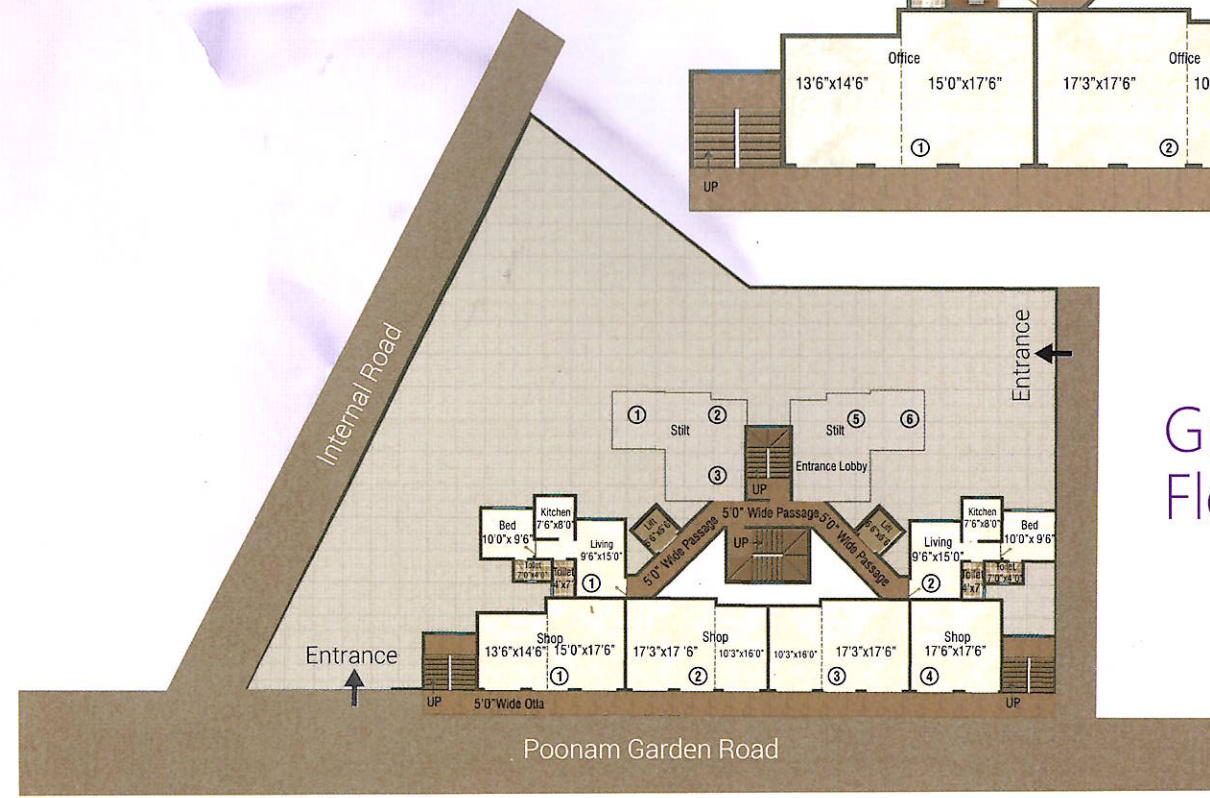
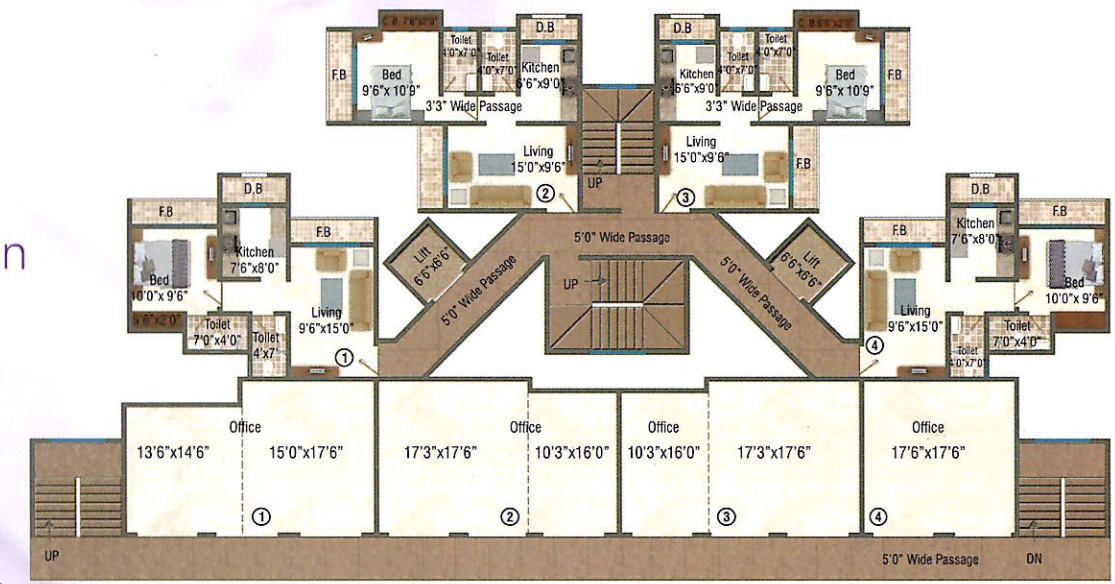
Vicinity

-  Easy Connectivity to National Highway
-  Easy Connectivity to Malls & Multiplexes
-  International Schools
-  Banks & Commercial Complexes
-  Temples



8th Floor Plan

1st Floor Plan



Ground Floor Plan





Marketed by:
PRATIK GROUP

9833466634/ 9821379688/ 9819974715
9320457753/ 9967053182/ 9820025843

SITE ADDRESS

Raviraj Spring, Near Poonam Garden, Off Mira Bhayander Road
Mira Road (E), Thane- 401 107

REGD OFFICE ADDRESS

A/ 101, Radharaman Apartments, Bapu Bhagve Road,
Kandarpada, Dahisar (W), Mumbai- 400 068
Tel.: 022 28914113/ 4
Email: ravirajhousing11@gmail.com
Web: www.ravirajhousing.com

Disclaimer:

Brand impressions, floor plans, layout plans, specifications, images, names, drawings, icons and other details herein are only indicative and the Developer/Promoter/Owner reserves the right to change all or any of them. Amenities and features of the project listed are subject to change/deletion at the discretion of the Company and/or subject to changes on the directions issued by the Competent Authorities.